

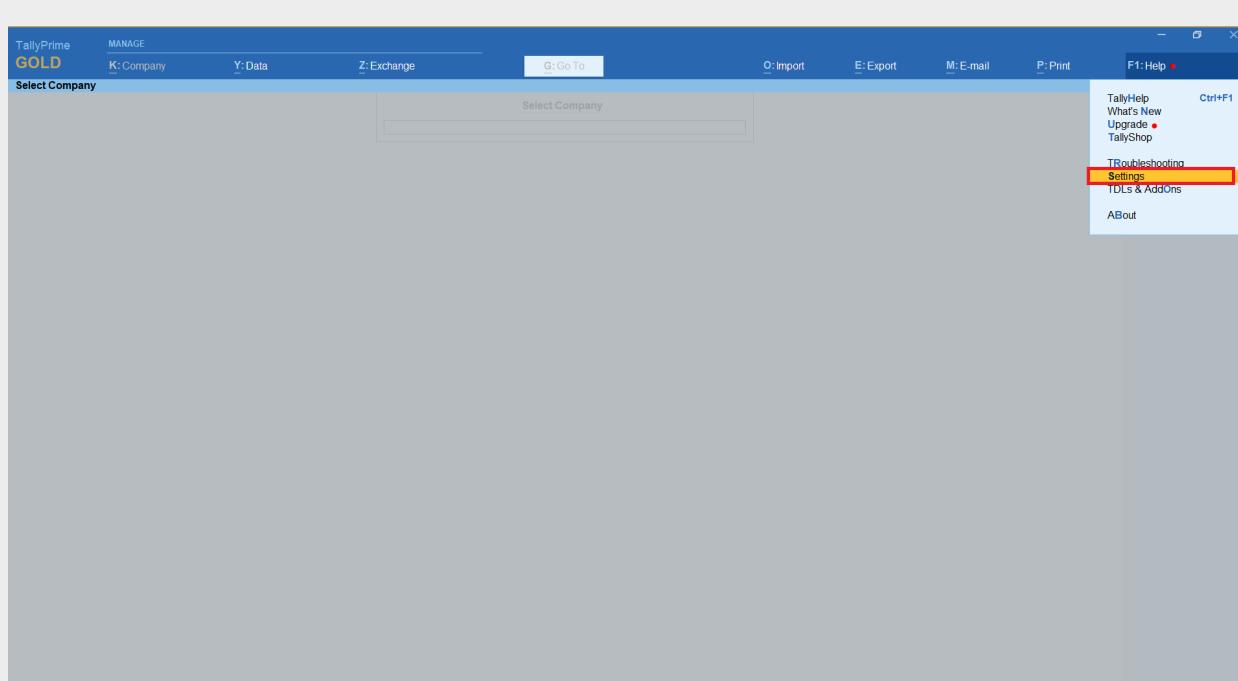
Two Step-Self Installation Guide for Tally Prime

1. **Install** the Finsights Desktop Sync Application where you run your Tally Prime. If you have a multi-user license, we recommend installing in your server.
2. **Open the Company** you would like to **sync in Tally Prime**.
3. Click on **Add Company** Tab in Finsights Desktop Application, select the Company and **Click on sync**.

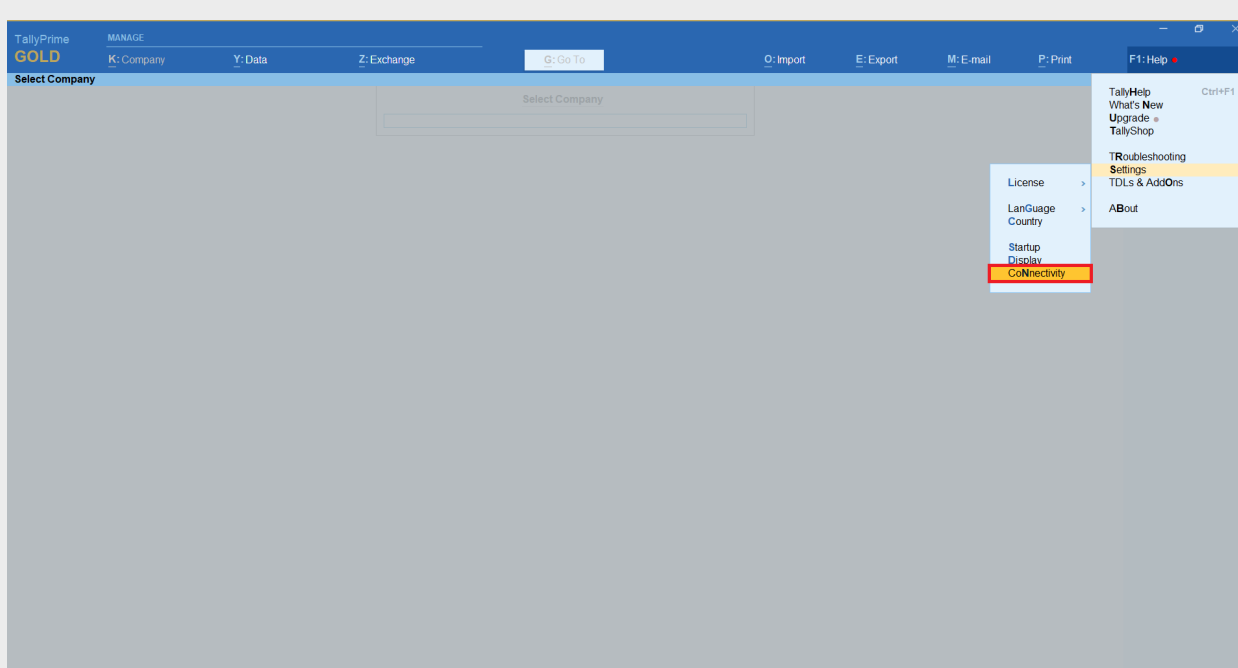
If Your Tally Prime is not connected to Finsights

Check the following settings in your Tally Prime:

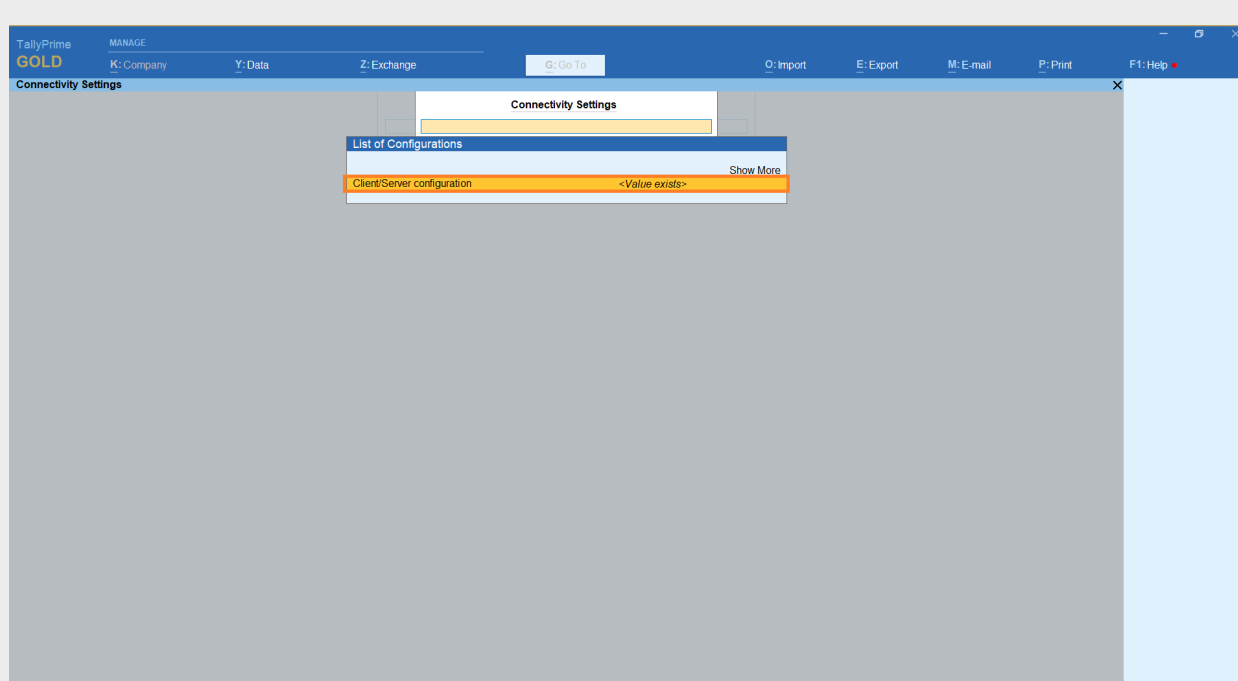
4. **Press F1** or click on Help in the Gateway of Tally screen.



5. Go to **Settings** -> Select **"Connectivity"** -> Press Enter.

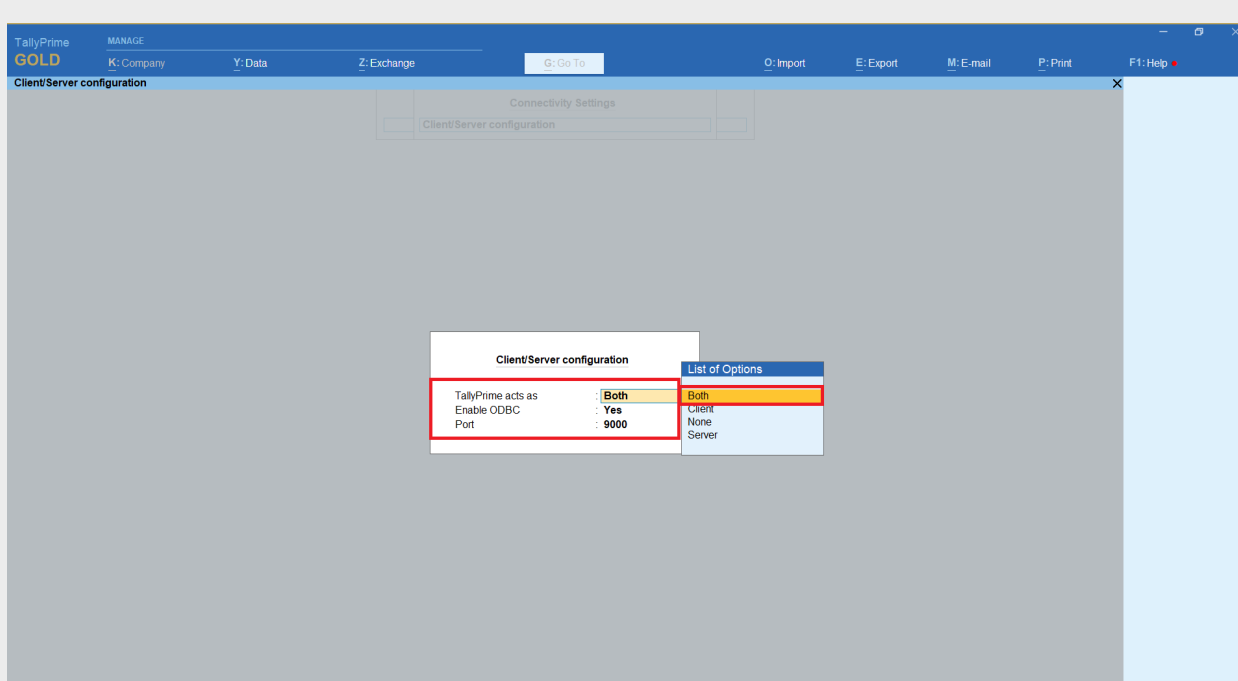


6. Select the **"Client Server configuration"** option in the Connectivity settings screen.

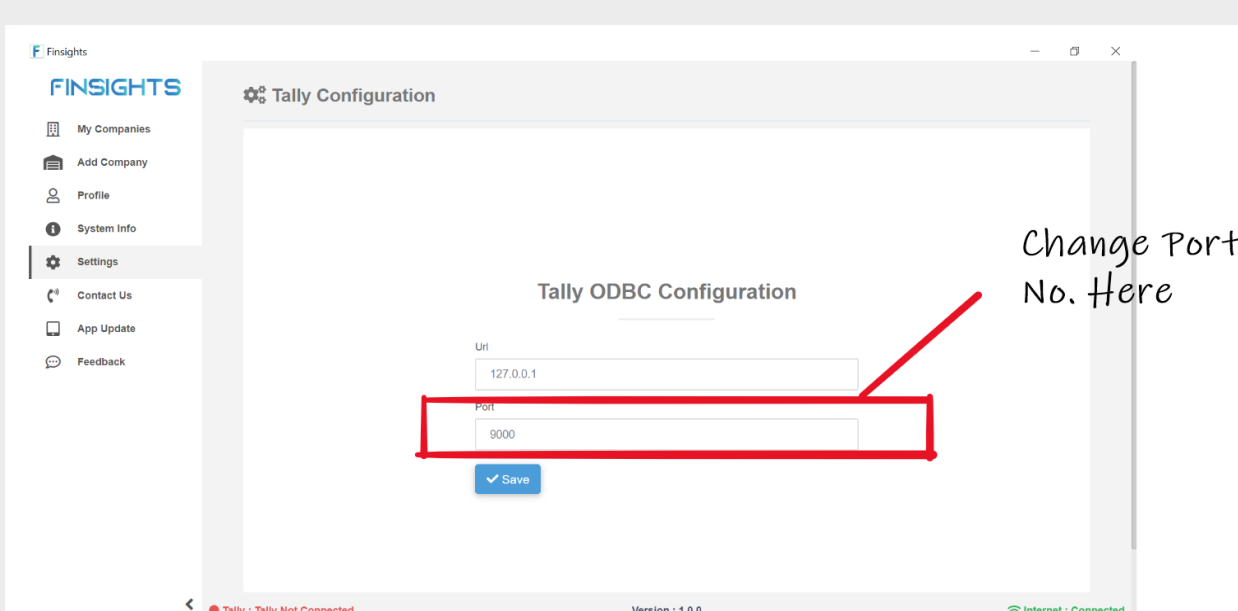


7. Under Client Server Configuration Screen:

- Tally is Acting as **Both**
- Enable ODBC Server **'Yes'**



8. Check Port Number: **If Port Number is Not 9000**, enter the port number in your Tally in Finsights Desktop Application -> Settings



9. In Finsights Desktop Application, Go to Add Company, Click on Refresh. Now the list of companies will be displayed. **Click on sync** on the Company that you would like to sync.